

DeNitra-Vault™

Designed and Manufactured by
EcoSense International

DeNitra-Vault™ At a Glance

Combines the power of
two proven systems:
EcoVault® & EcoVault-DN™

Gets more TMDL nutrient
credits than a second-
generation baffle box

NutriGone™ filter media
achieves excellent
nutrient removal rates

Maintenance similar to a
standard Type II Baffle Box

About the DeNitra-Vault™

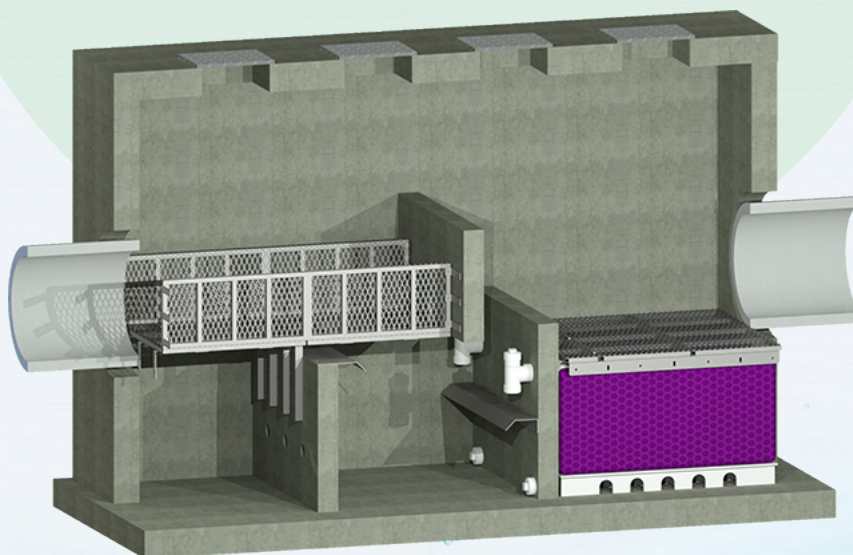
The DeNitra-Vault™ stormwater treatment system couples the proven separation performance of the EcoVault® with NutriGone™, the powerful media of the EcoVault-DN™, in an upflow configuration.

A Great Solution for Limited Space

The EcoVault® is a multi-stage system that provides separation, screening, and filtration. It removes coarse organic materials and debris, sediments, excess nutrients, oil, and grease.

The EcoVault-DN™ is powered by NutriGone™, a superior, all-natural, bio-active denitrification and phosphorus adsorption media that meets all international discharge standards.

The DeNitra-Vault™ packs all of this power into space similar to the size of an EcoVault®. If you need the treatment of both, but don't have space for a two-vault system, the DeNitra-Vault™ is the solution.



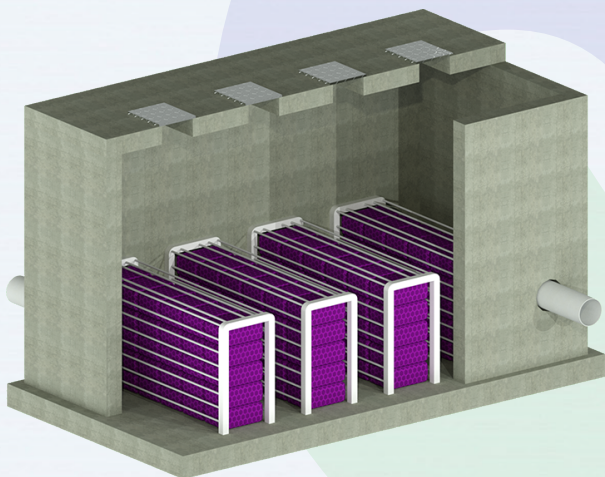
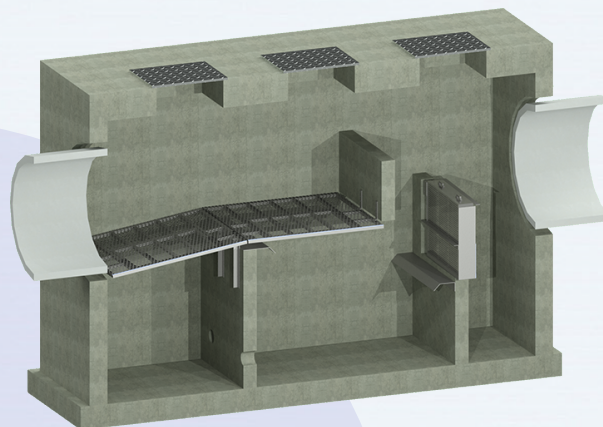
DeNitra-Vault™: Combining the separation performance of an EcoVault® (left) and nutrient removal power of the EcoVault-DN™ with NutriGone™ (right) in an upflow configuration.

Feature-packed and Easy to Maintain

Combining the features of an EcoVault® and EcoVault-DN™ means that you get the best of both with a DeNitra-Vault™.

The performance of an EcoVault®

- Treats high flow as if it were a Type II Baffle Box
- Reduces decomposition and nutrient leeching by trapping and storing coarse organic material and debris above the static water line
- Variable sizing depending on site conditions and requirements



The power of an EcoVault-DN™

- Uses NutriGone™, a two-stage media that provides a short- and long-term carbon source for denitrification, removes heavy metals, and adsorbs phosphorus
- Treats low flow or background flows through the media bed

Maintenance

The DeNitra-Vault™ is easy to inspect and maintain, with multiple hatches built in to the top to allow access to the entire structure. Quarterly inspection is recommended, and servicing should be performed on an as-needed basis.

The baffle box portion is serviced as if were is a standard baffle box. The media bed is accessible through a removable bi-fold deck, and can be backflushed. Service ports allow for cleanout of the distribution chamber beneath the media bed.

To learn more about the DeNitra-Vault™ and other EcoSense products, visit us at ecosenseint.com